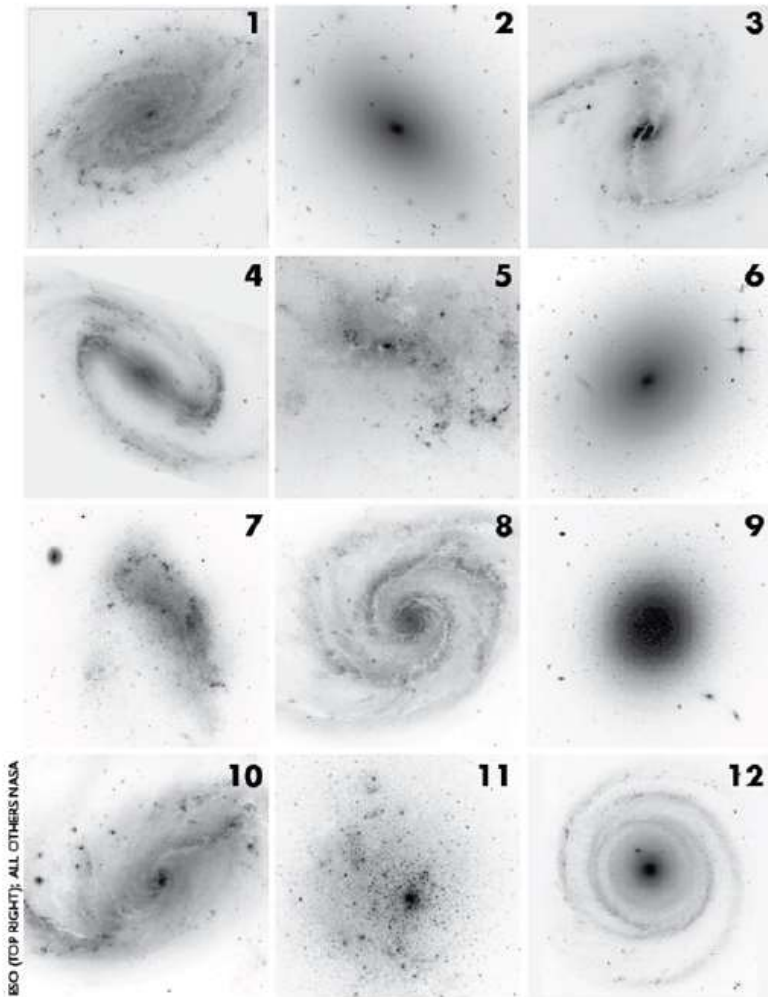


Date: _____

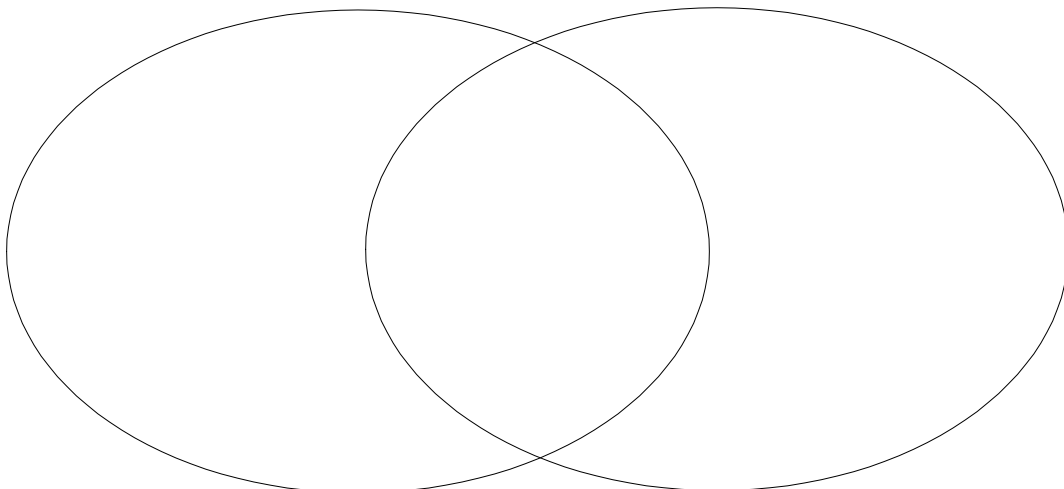
SNC1D

Identifying Galaxies

These are reverse-colour images of galaxies in the Coma cluster, taken by the Hubble Space Telescope. Classify each galaxy as spiral, elliptical, or irregular.



Complete a Venn diagram comparing and contrasting open and globular star clusters.



List the pieces of evidence that show the Milky Way is a spiral galaxy and that the Sun is on one its arms.

Identify the type of galaxy.

